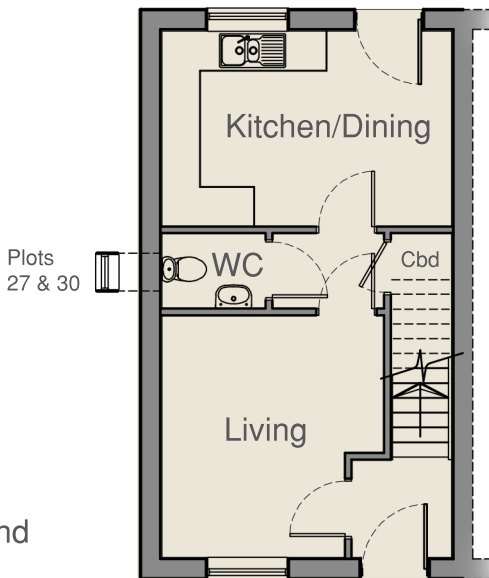




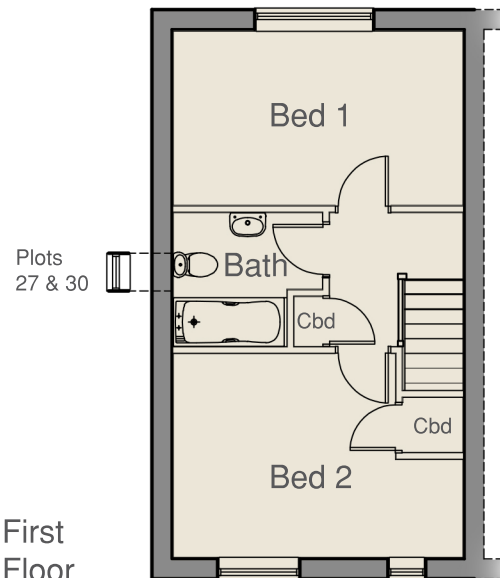
The Hawthorn

2 Bedroom Terrace



Ground Floor

Kitchen/Dining - 4.37m x 2.95m - 14'4" x 9'8"
 Living - 3.66m x 3.36m - 12' x 11'
 WC - 1.56m x 1.12m - 5'1" x 3'8"



First Floor

Bedroom 1 - 4.37m x 3.08m - 14'4" x 10'1"
 Bedroom 2 - 4.37m x 2.63m - 14'4" x 8'8"
 Bathroom - 2.25m x 2.01m - 7'5" x 6'7"